

# MONTHLY MEMBERSHIP PROGRESS REPORT

District 23 B

Results as of: 6/30/2020

GMT:

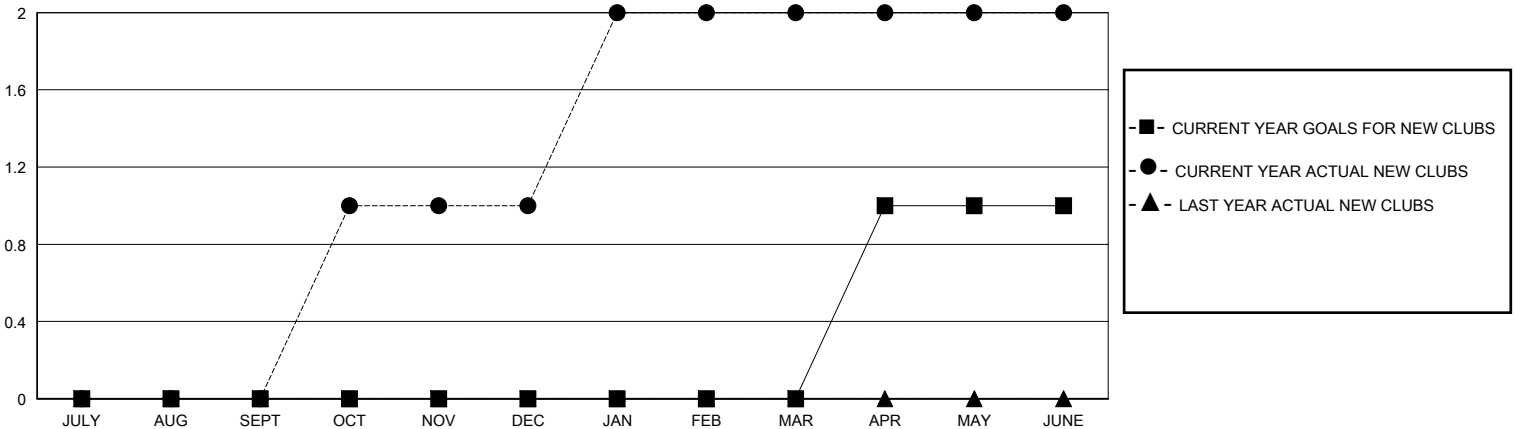
LOCATION CONNECTICUT

GMT CA

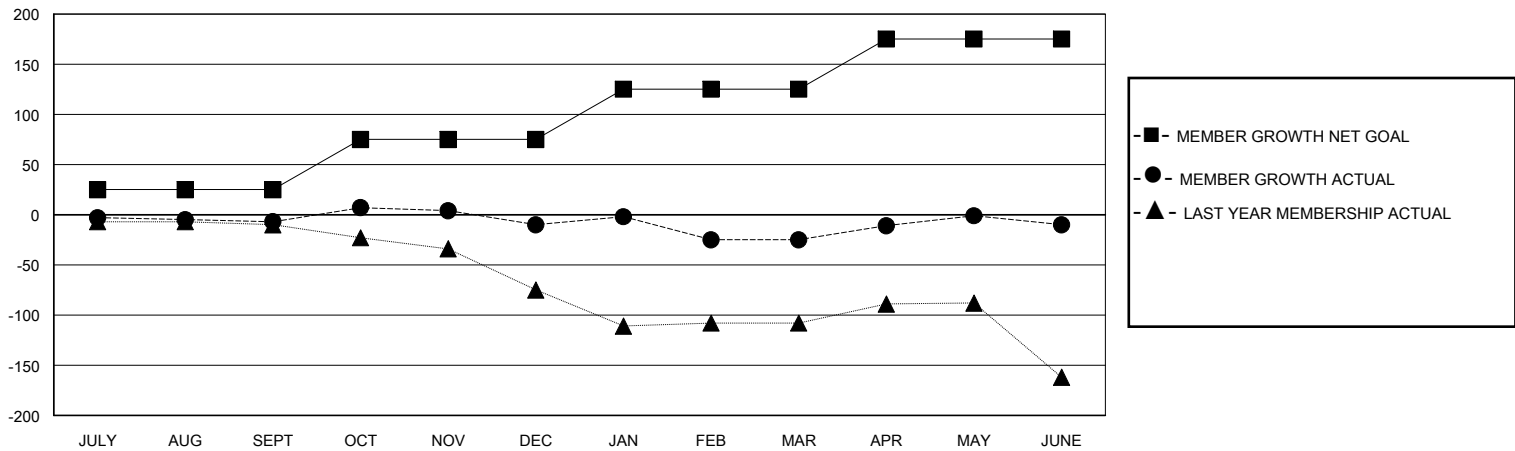
Clubs			
RESULTS FOR 2019-2020			
QUARTER	NEW CLUB GOAL	NEW CLUBS	DROPPED CLUBS
JULY/AUG/SEPT	0	0	0
OCT/NOV/DEC	0	1	1
JAN/FEB/MAR	0	1	1
APR/MAY/JUNE	1	0	0

Members			
RESULTS FOR 2019-2020			
QUARTER	MEMBER GROWTH NET GOAL	MEMBER GROWTH ACTUAL	DROPPED MEMBERS ACTUAL (including transfers)
JULY/AUG/SEPT	25	22	28
OCT/NOV/DEC	50	69	70
JAN/FEB/MAR	50	53	64
APR/MAY/JUNE	50	86	66

GOALS AND ACTUAL NEW CLUBS CUMULATIVE



GOALS AND ACTUAL MEMBERS CUMULATIVE



DROPPED CLUBS: 2

42 CLUBS OF 55 ADDED 1 OR MORE NEW MEMBERS

GENDER DISTRIBUTION

MALE 1,166 (67.05%)  
FEMALE 573 (32.95%)

DROPPED MEMBERS

[CLICK HERE FOR CUMULATIVE MEMBERSHIP DATA](#)

DECEASED	18
CLUB CANCELLED	8
OTHER	200
<b>TOTAL</b>	<b>226</b>

TOTAL FAMILY UNIT MEMBERS	363
FAMILY MEMBERS PAYING HALF DUES	193